

The identification of unknown human remains

Marcel A. Verhoff

Institut für Rechtsmedizin, Universitätsklinikum Frankfurt,
Goethe-Universität, Frankfurt am Main



sociocultural identity?

cultural identity?

personality?

human being as a distinct and unique individual!

individual's personal rights remain intact even after his or her death!

- 1) remains of one (or a few) individual(s), found outside, above or in the ground, no suggestion who the person - or the persons - may be, no clues that can point one to the person's identity
- 2) human remains are found in settings that suggest the identity of the decedent
- 3) mass disaster

Identification – two-step system

1st step:

collection of identifying clues

=> “biological profile”

2nd step:

comparison of antemortem data and postmortem data to establish

the decedent’s identity

- sex
- age-at-death
- stature
- ancestry
- as much information as possible for additional identifying clues
 - old injuries
 - surgical implants (perhaps even with serial numbers)
 - DNA phenotyping

Obtain antemortem data for the individual or individuals determined on the missing persons lists as possible matches to the decedent's biological profile!

Is ante-mortem material already gathered in the process of registering the missing person?

Is this material even already been evaluated so that data such as DNA-analysis profiles or dental status reports are at hand?

Gather all possible antemortem comparison materials or restrict the collection of antemortem materials to fit the available postmortem material?

In a case with only skeletonized remains, it would not make sense to collect antemortem comparison data such as tattoos or finger prints, since these data aren't available postmortem.

But, in case the unidentified human remains turned out not to be those of the missing person...

- Forensic DNA-analysis
- Forensic odontostomatology (odontogram)
- Radiographic comparison analysis
- Skull-photo superimposition
- Photo-comparison analysis
- Implants with serial numbers
- Tattoos
- Finger prints

- Forensic DNA-analysis
- Forensic odontostomatology (odontogram)
- **Radiographic comparison analysis**
- **Skull-photo superimposition**
- Photo-comparison analysis
- Implants with serial numbers
- Tattoos
- Finger prints

- **Forensic DNA-analysis**
- **Forensic odontostomatology** (odontogram)
- Radiographic comparison analysis
- Skull-photo superimposition
- Photo-comparison analysis
- Implants with serial numbers
- Tattoos
- **Finger prints**

The first identification step (biological profile) can be skipped.

But, it might not be better to also routinely compile a biological profile?

Air plane crashes: collection of the antemortem data of the persons on the passenger list

But: the official passenger lists only rarely correctly correspond with actual the passengers on board!

Case 1



Case 1



Case 1



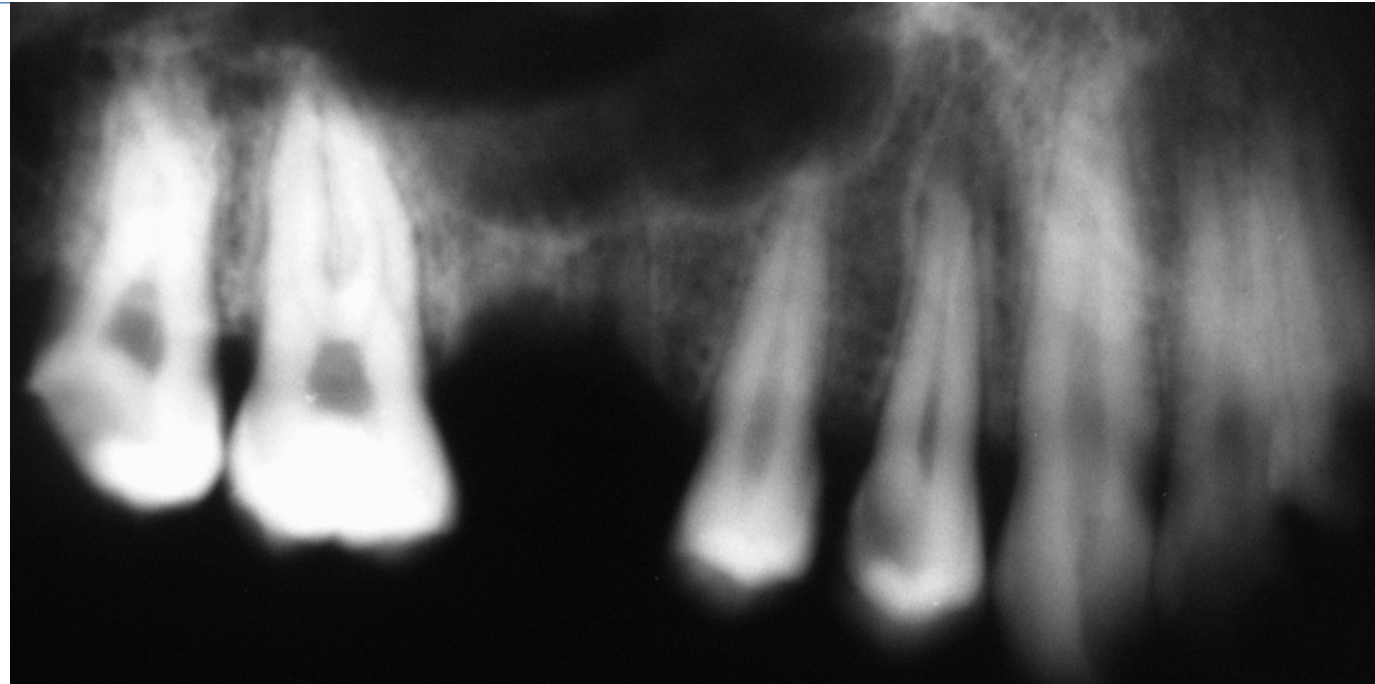
PM



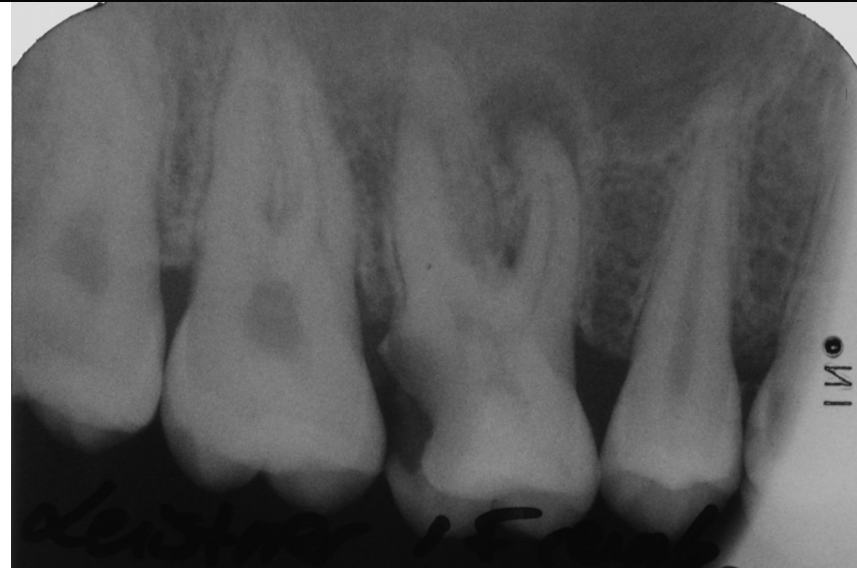
AM

Radiographic comparison: dental x-rays

PM



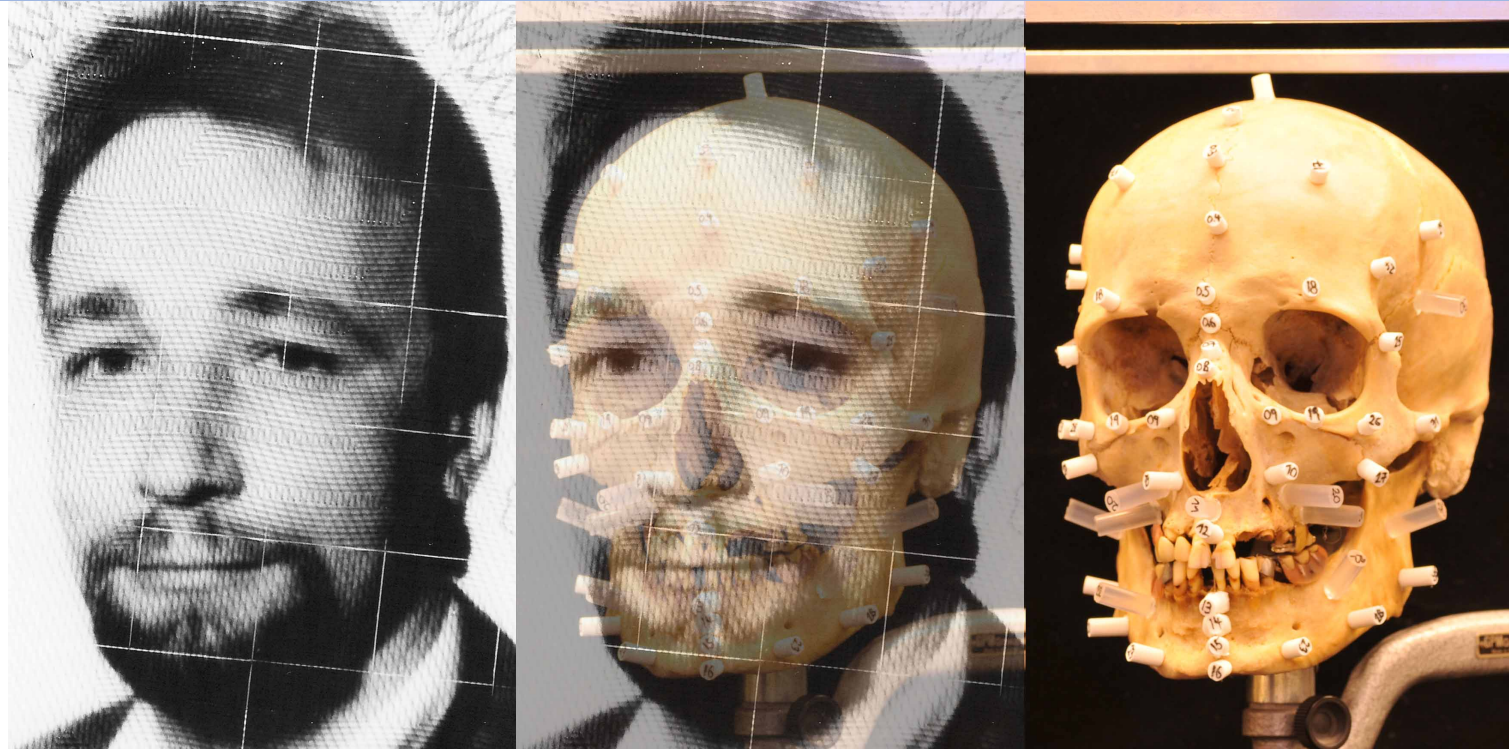
AM



Case 2



Case 2 - method



Int J Legal Med (2010) 124:471–475
DOI 10.1007/s00414-010-0494-9

CASE REPORT

Superimposition technique for skull identification with Afloat® software

Christoph G. Birngruber • Kerstin Kreutz •
Frank Ramsthaler • Jonathan Krähhahn •
Marcel A. Verhoff

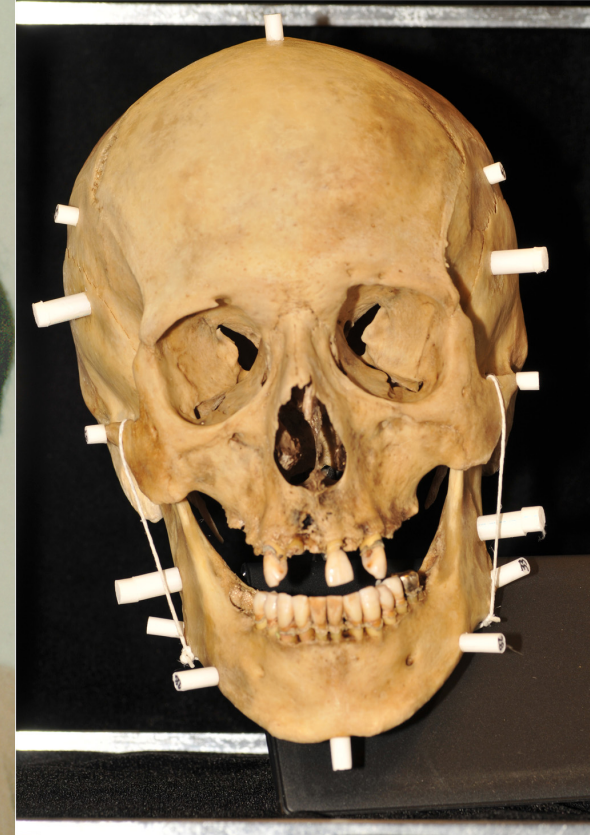
Case 2



AM



superimposition



PM